

## Flauto 2

# FOLLIE DI DONNA

Walzer

Durata circa 19'50"

Grado 4.5

Amilcare Ponchielli (1834 - 1886) Op. 122

Versione per banda sinfonica di Emiliano Gusperti

Andante moderato (♩ = 60) poco rall. Walzer n° 1 (♩ = 200)

1-14 15-19 21-24 *pp*

26 1 5 1 *pp*

36-40 *pp*

46 *mf*

53 2 3 *p*

61 3 *p*

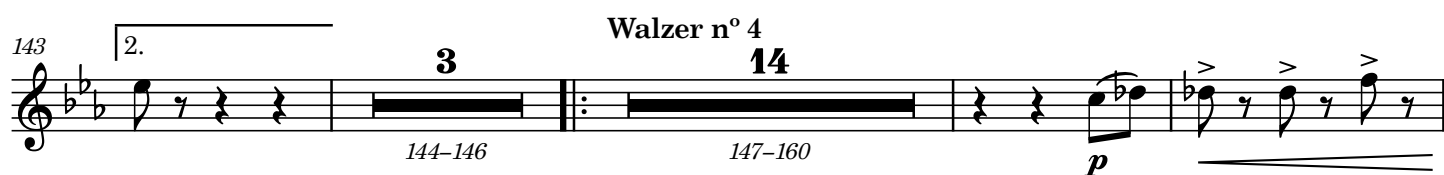
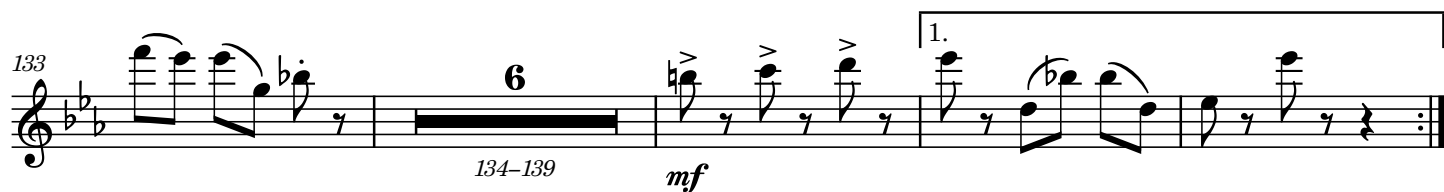
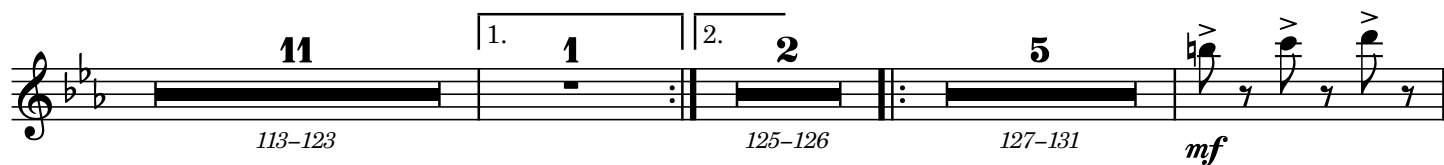
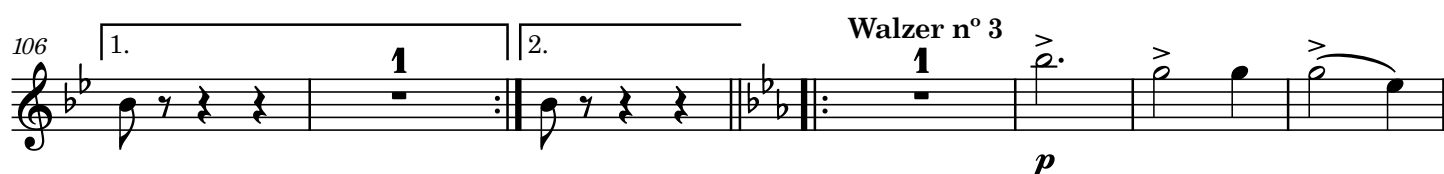
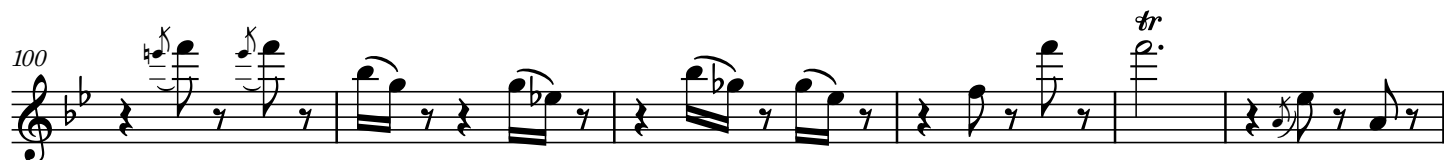
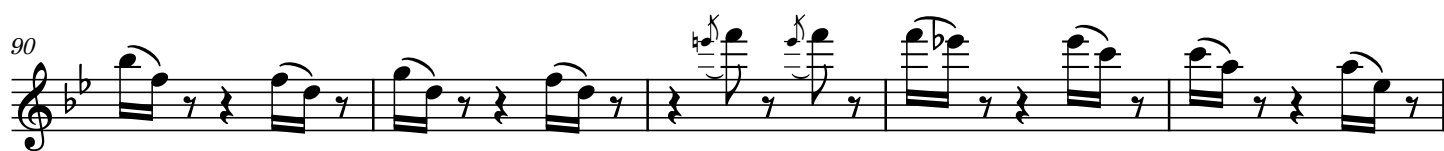
69 1. 2. Walzer n° 2 2 *f* 2

71-72 75-76

77 *tr* 2 *tr* *pp*

79-80

84 1. 2. *pp*



11  
173-183  
*p* *mf* *pp*

188  
8  
189-196  
*pp*

203  
1. 2.  
1 Walzer n° 5  
*p*

209  
*f* *p*

216  
*f*

223

230  
1. 2.  
*f*

237

244  
1. 2.  
*f*

249 **Coda** 8  
250-257 *mp* cre - - - - - scen - - - - -

261 - - - - - do - - - - - *ff*

267 *poco rit.* *a tempo*  
270-273 *pp*

276 5 1 5  
277-281 *pp* 285-289

290 *pp* *mf*

297 3  
302-304

305 *p* 3  
310-312

313 *p* **Valzer n° 2** 2  
318-319

320 *f* 2 2  
322-323 326-327

328 *tr* *pp*

334 *pp*

339

344 *tr* *p*

350 *x 2<sup>a</sup>* *p*

357 *tr* *x 1<sup>a</sup>* *cresc.*

364 *stringendo*

371 *tr* *ff*

378 *tr*

385 *1* *1*